



Level



Pressure



Flow



Temperature



Liquid
Analysis



Registration



Systems
Components



Services



Solutions

Field Xpert



Field Xpert is a high performance device configurator that meets the needs and requirements of the process industry:

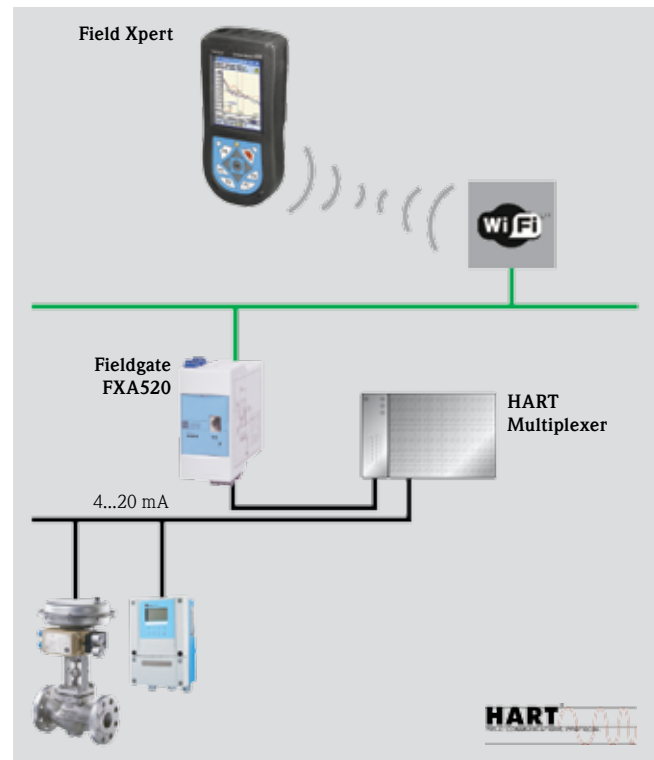
- Handheld for device configuration
- Wireless communication via Bluetooth™ or WLAN based on an industrial PDA
- Device Xpert – Configuration software package for field device commissioning, diagnosis and maintenance
- Envelope curves for Endress+Hauser time-of-flight level devices

Flexible, ergonomic and robust ...

Connection



Field Xpert with Bluetooth™ connection



Field Xpert with WLAN (WiFi™) connection

About Field Xpert

Field Xpert

Field Xpert is a compact, flexible, ergonomic and robust industrial PDA adapted to your needs for high productivity.

The Field Xpert package comprises:

- Field Xpert device
- Device Xpert configuration software for all registered HART devices
- HART/Bluetooth™ modem for device connection

Field Xpert offers functions to reduce your instrument setup and diagnosis time. It operates with HART/Bluetooth™ modem and WLAN supported networks.

Device Xpert

Device Xpert configuration software makes Field Xpert the complete HART communicator for industrial applications. Device Xpert is designed for project commissioning and maintenance. It is designed to support the daily requirements of field technicians.

By supporting special device functions, e.g. envelope curves from Endress+Hauser time-of-flight level transmitters and automatic distribution of Device Descriptions (DD) via Internet or WLAN, Device Xpert ensures quick and flexible working.

Device Xpert supports Endress+Hauser's Fieldgate FXA520, allowing Ethernet communication to your remote HART field devices. Support for other communication protocols is in development.

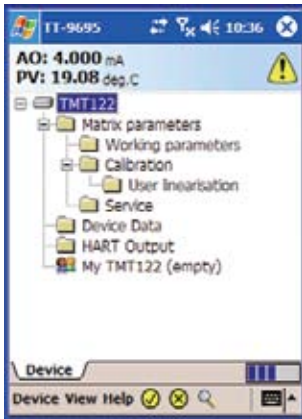
Flexible architecture

The Windows Mobile™ operating system makes it possible to install further software applications for Plant Asset Management activities such as maintenance and documentation.

The Endress+Hauser software packages of the Xpert series run well on Field Xpert. This makes Field Xpert a real all-rounder for tough industrial applications.

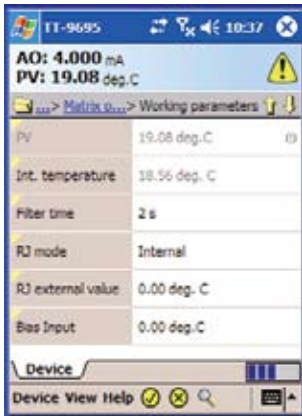
optimized for high productivity

Device Xpert



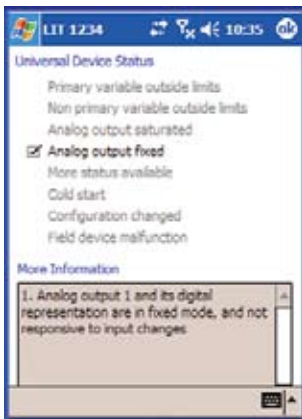
■ Connections

Device Xpert supports the use of multiple connections. The user can configure a specific serial port and address scan range appropriate to one scenario and then configure another connection to address a different requirement. Each device is shown in a group view, so that the correct parameter is easily found.



■ Device configuration

Every parameter is easy to find and to configure. If the location of a specific function is unknown, the integrated Function Finder locates it in all HART devices. This is especially useful with complex devices with many parameters.



■ Device diagnosis

Device Xpert offers the range of diagnosis supported by the Device Description (DD). Basic information such as device status can be seen at a glance, making diagnosis easy.



■ Device extensions

Device Xpert interprets DD extensions, allowing access to custom functionality that is normally not available in a handheld terminal. Such functions include envelope curves for Endress+Hauser level transmitters, valve signatures for positioner actuators and custom calibration routines.



Technical data at a glance

Display

- 3.5" transreflective TFT color
- 64k, QVGA, 240 x 320 pixel
- Portrait and landscape mode
- Protected by a Makrolon panel

Power Supply

Rechargeable lithium ion battery

- Non-Ex version: 2880 mAh
- Ex version: 3600 mAh

Housing

- Protection class IP 65 (immersion for brief periods)
- Antistatic
- Non-corroding

Dimensions [L x W x D]

178 x 85 x 39 mm

Weight

- Non-Ex version: 550 gram
- Ex version: 700 gram

Temperature ranges

- Storage: -10°C up to +60°C
- Charging: 0°C up to +45°C
- Working, non-Ex version: -10°C up to +60°C
- Working, Ex version: -10°C up to +50°C

Relative humidity

Storage and operation: up to 90% r.h.

Supplementary documentation

- HART
Competence Brochure - CP004S/04/en
- W@M - Life Cycle Management
Competence Brochure - CP001Z/00/en



12.06/1.1.

Instruments International

Endress+Hauser
Instruments International AG
Kaegenstrasse 2
4153 Reinach
Switzerland
Tel. +41 61 715 81 00
Fax +41 61 715 25 00
<http://www.endress.com>
info@ii.endress.com